

C harp full chromatic scale (with overbends)

C harp

Three staves of musical notation for the C harp full chromatic scale (with overbends). The first staff is in bass clef, the second and third are in treble clef. The notes are: 1, -1', -1, 1o, 2, -2'', -2', -2, -3''', -3'', -3', -3. The second staff contains: 4, -4', -4, 4o, 5, -5, 5o, 6, -6', -6, 6o, -7. The third staff contains: 7, -7o, -8, 8', 8, -9, 9o, 9, -9o, -10, 10'', 10', 10'.

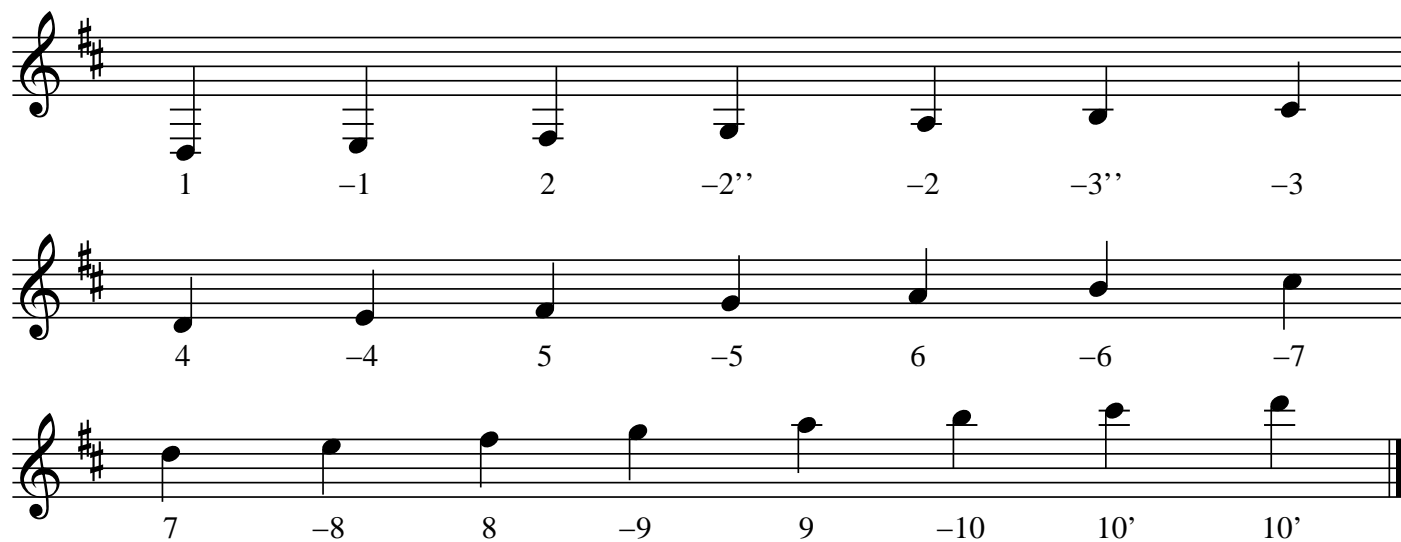
G harp major scale

G harp

Three staves of musical notation for the G harp major scale. The first staff is in bass clef with a key signature of one sharp (F#), the second and third are in treble clef with a key signature of one sharp (F#). The notes are: 1, -1, 2, -2'', -2, -3'', -3. The second staff contains: 4, -4, 5, -5, 6, -6, -7. The third staff contains: 7, -8, 8, -9, 9, -10, 10', 10'.

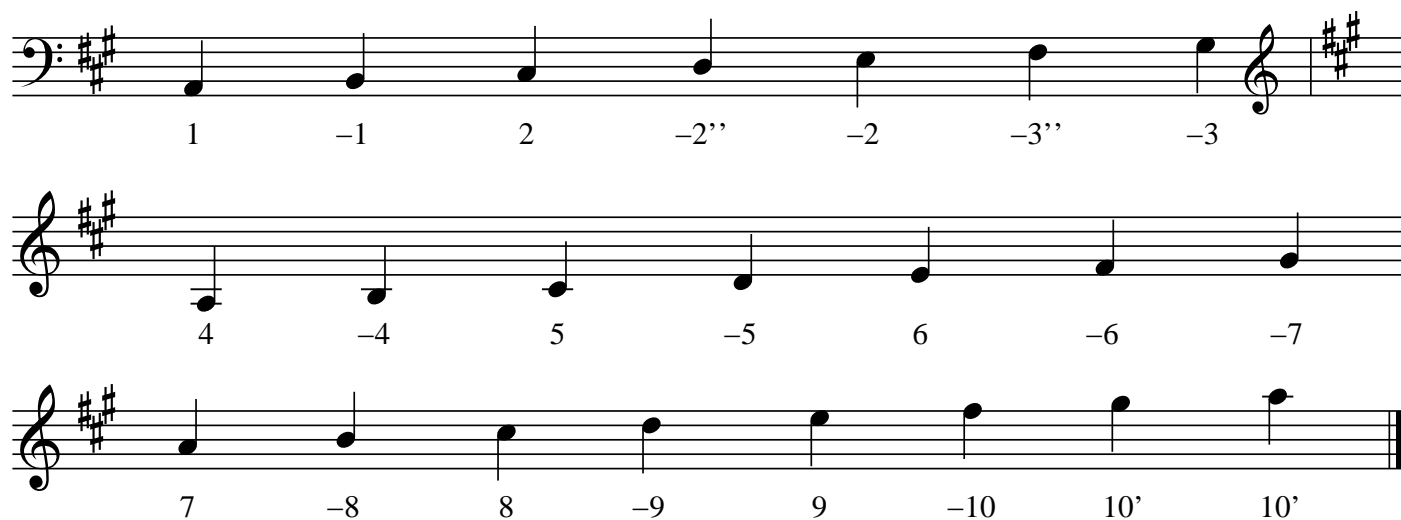
D harp major scale

D harp



A harp major scale

A harp



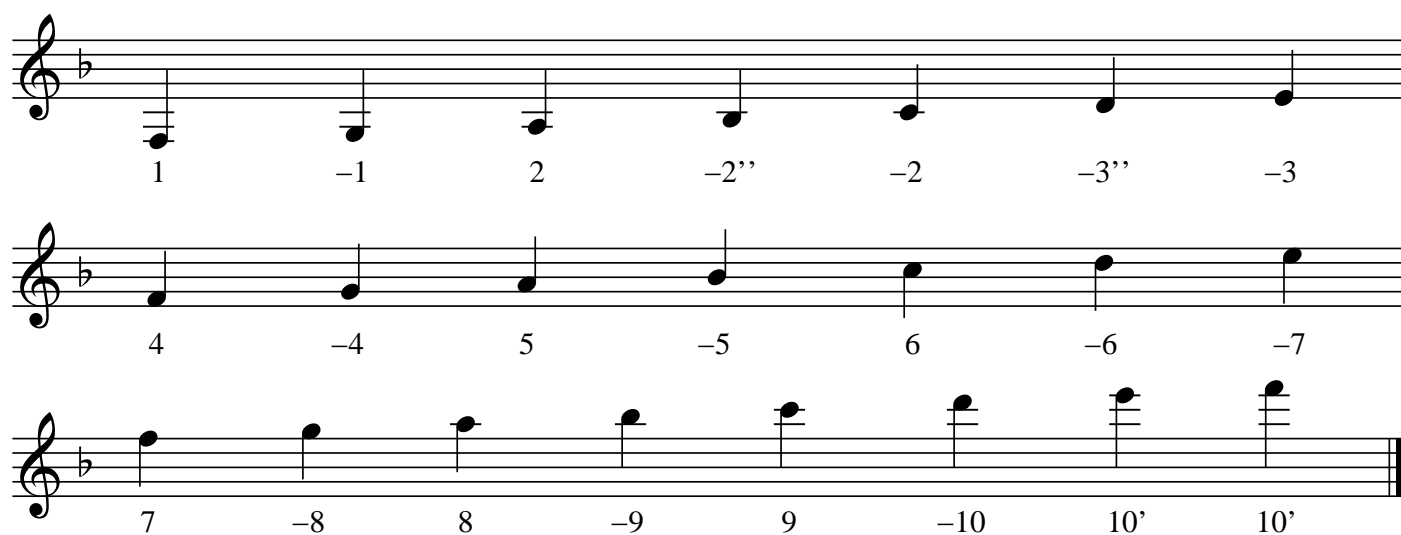
E harp major scale

E harp



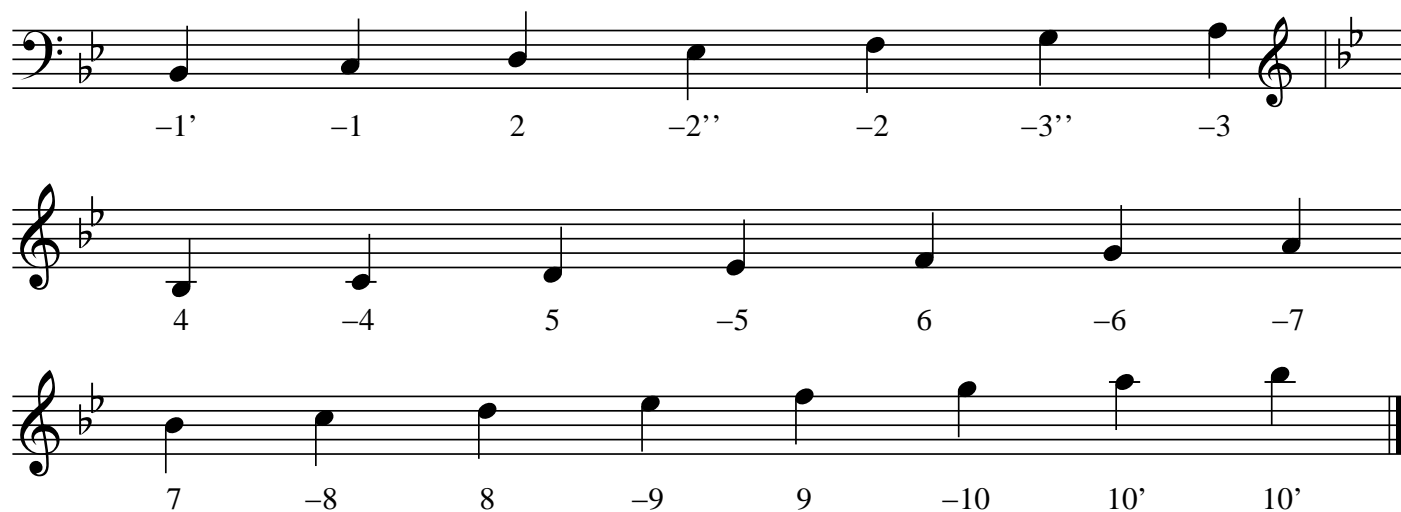
F harp major scale

F harp



Bb harp major scale

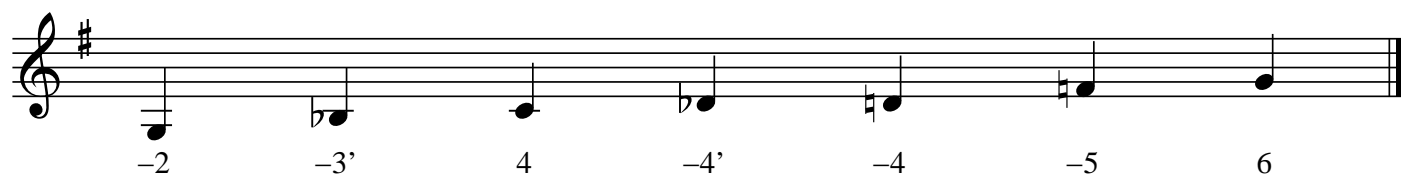
A#/Bb harp



G blues scale on a C harp

cross harp, lower octave

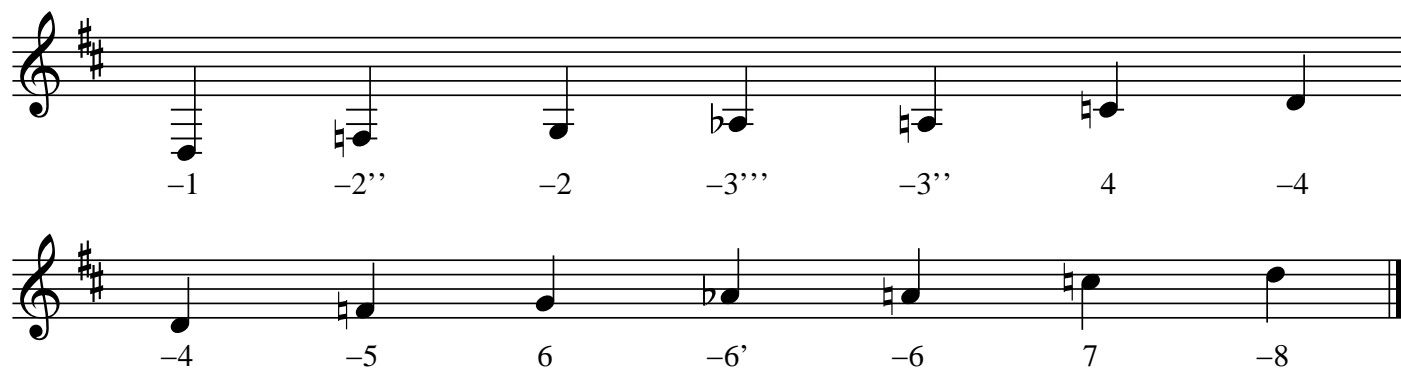
C harp



D blues scale on a C harp

slant harp, lower and middle octaves

C harp



Autumn Leaves

No overbends – so one note unplayable

G harp

$\text{♩} = 80$

Am7 D7 Gmaj7

Cmaj7 F#m7b5 1 B7 Em

2 B7 Em

F#m7b5 B7b9 Em

Am7 D7 Gmaj7

F#m7b5 B7b9 Em7 Eb7 Dm7 Db7

Cmaj7 B7b9 Em

Fingerings: -6 -7 7 -9 6 -6 -7 8 8

Fingerings: 8 -5 6 -6 -8 5 x -6' 7

Fingerings: -6 -7 7 -8 -7 -8 7 -6 -6' -6

Fingerings: -7 5 -7 -7 -6 -7 7 7 -7 7

Fingerings: -8 6 9 -9 8 8' 8

Fingerings: -9 -9 -8 -8 -7 -9 8 8 -6

Fingerings: -8 7 -7 7 5 -6